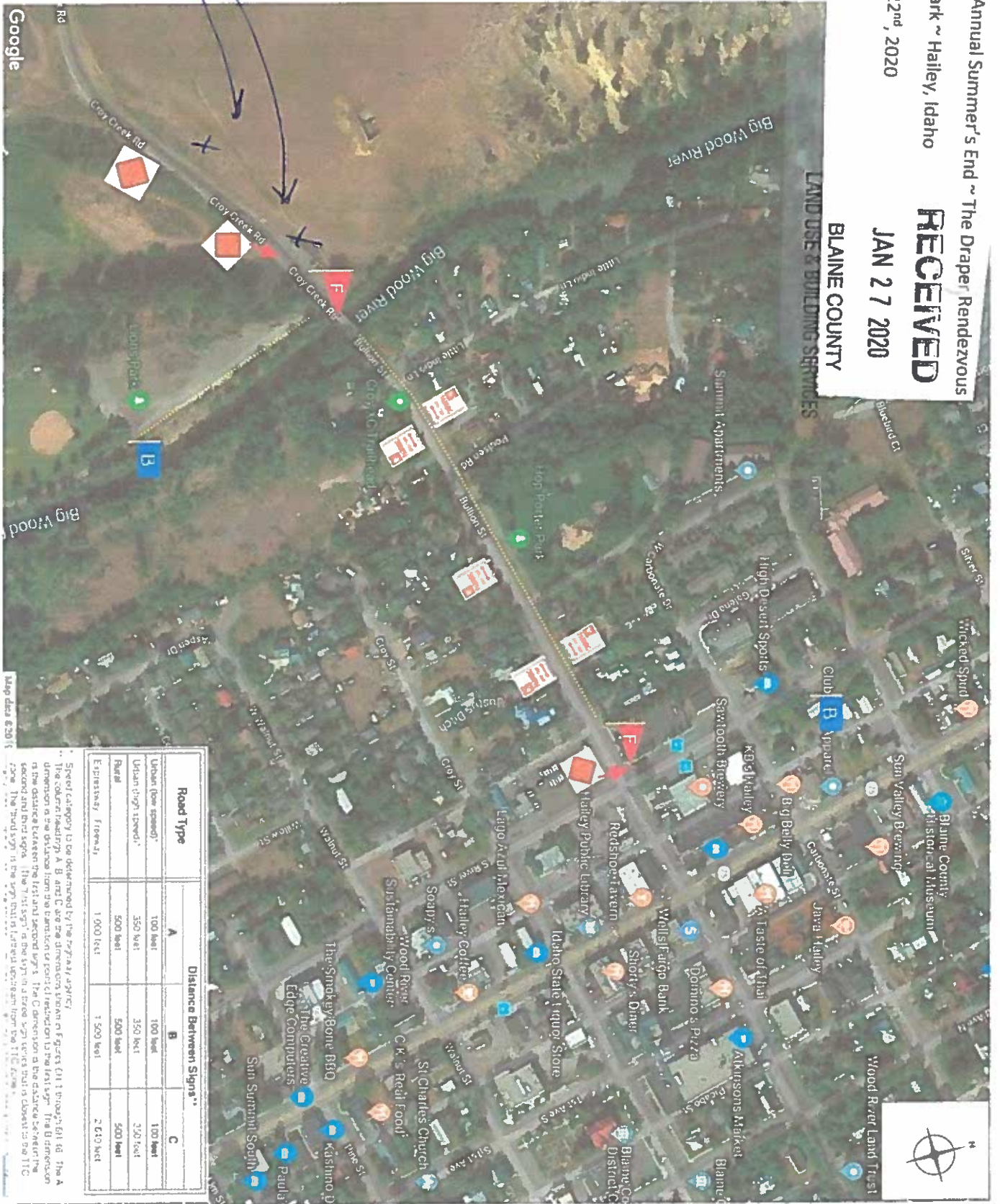


The 2nd Annual Summer's End ~ The Draper, Rendezvous
 Lion's Park ~ Hailey, Idaho
 August 22nd, 2020

RECEIVED
 JAN 27 2020
 BLAINE COUNTY
 LAND USE & BUILDING SERVICES



Road Type	Distance Between Signs**		
	A	B	C
Urban (low speed)	100 feet	100 feet	100 feet
Urban (high speed)	350 feet	350 feet	350 feet
Rural	500 feet	500 feet	500 feet
Expressway / Freeway	1,000 feet	1,500 feet	2,000 feet

** Speed category to be determined by the sign as they apply.
 The column headings, A, B and C are the dimensions shown on the signs. The A dimension is the distance from the bottom of the sign to the top of the sign. The B dimension is the distance between the first and second signs. The C dimension is the distance between the second and third signs. The "7" sign is the sign that is closest to the 11C zone. The "No Parking" sign is the sign that is closest to the 11C zone.



Google

Map data © 2015

The 2nd Annual Summer's End ~ The Draper Rendezvous

Lion's Park ~ Hailey, Idaho

August 22nd, 2020

SALES AND SERVICE



Imagery ©2019 Google, Map data ©2019 Google 50 ft

- █ CARS + Trucks
- █ VENDOR ROUTE
- █ EMT / FIRE / SECURITY
- █ ARTIST ROUTE
- █ Bathroom Pickup / Drop off Location

RECEIVED

JAN 27 2020

BLAINE COUNTY
LAND USE & BUILDING SERVICES

The 2nd Annual Summer's End ~ The Draper Rendezvous
 Lion's Park ~ Hailey, Idaho

August 22nd, 2020



Google

Imagery ©2019 Google, Map data ©2019 Google 200 ft
 Shuttle Route

Traffic Control / Shuttle Route
 Parking #2

RECEIVED

JAN 27 2020

BLAINE COUNTY
 LAND USE & BUILDING SERVICES

- Proposal Parking for Summer's End
- Dr. Swan Music Summer's End Tables.
 - 1 Parking lot & shuttle transportation (DSM private booking)
 - 2 River & Crog Creek checkpoint
 - 3 Entrance to Summer's End
 - 4 Ticket checking / Main Gate for Festival grounds